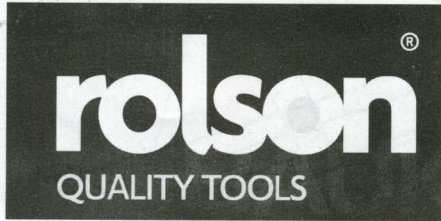
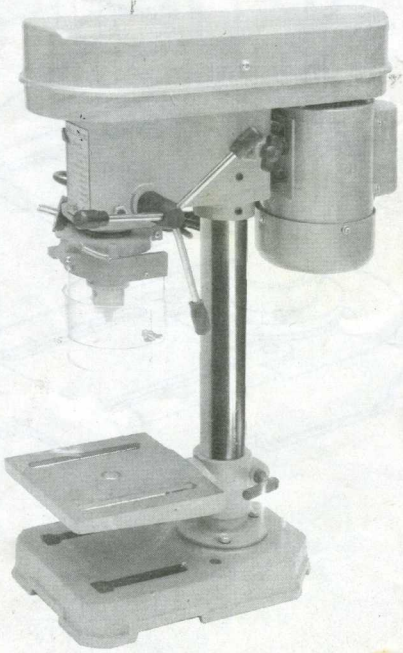


48189



## DRILL PRESS

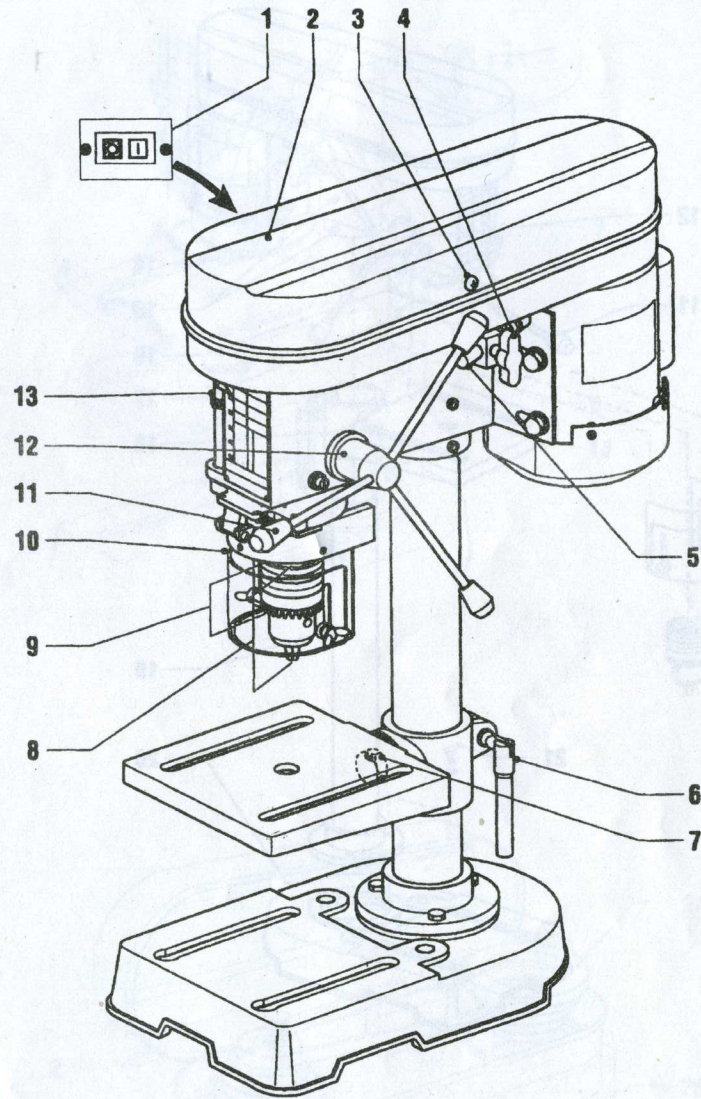


Please keep this instruction manual for future reference.

48189



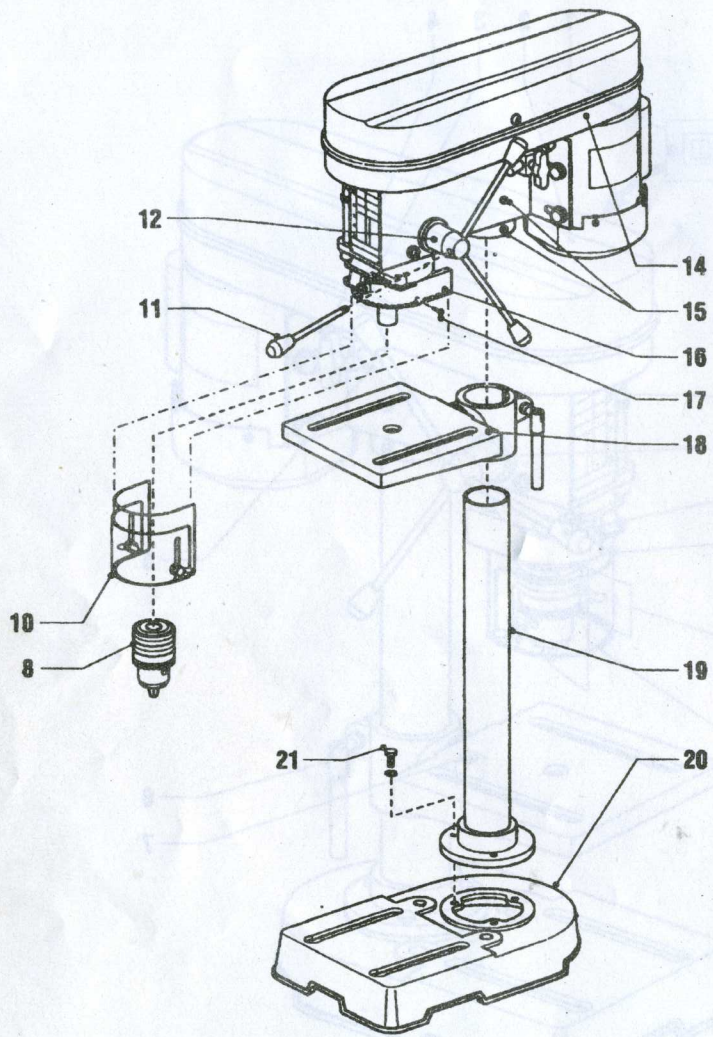
DRILL PRESS



A

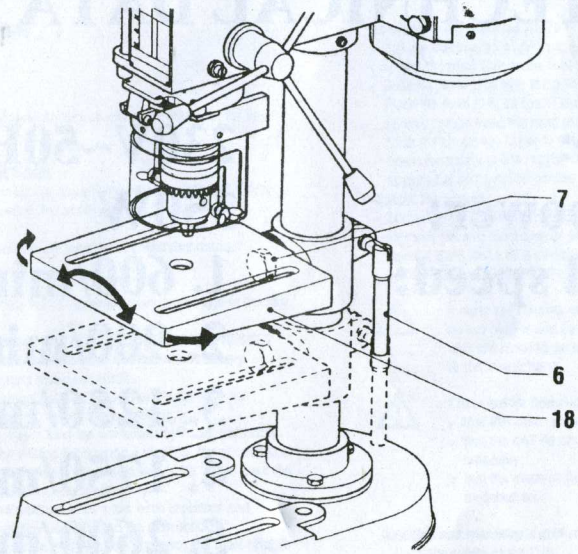
Please keep this instruction manual for future reference.

8

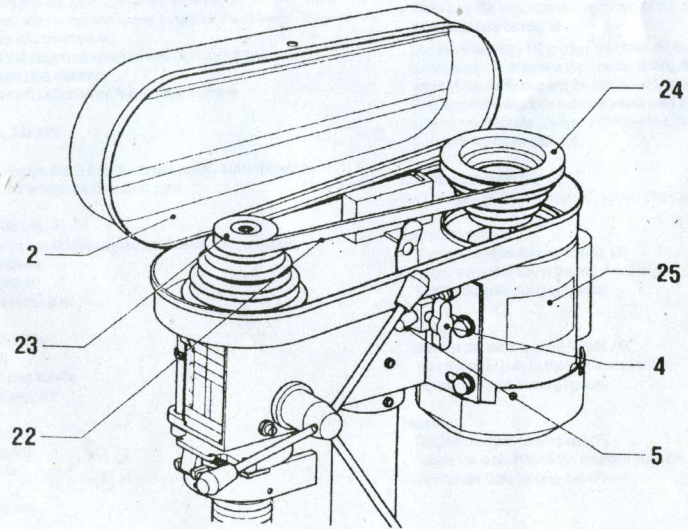


2

B



C

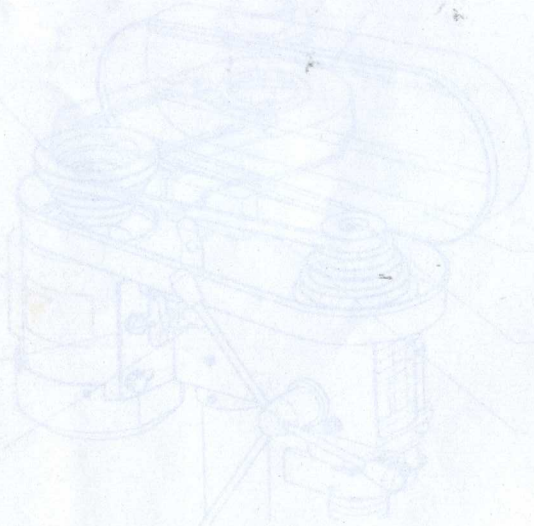


3

D

# TECHNICAL DATA

|                       |                    |
|-----------------------|--------------------|
| <b>Voltage:</b>       | <b>230V~50Hz</b>   |
| <b>Input power:</b>   | <b>350W</b>        |
| <b>No load speed:</b> | <b>1. 600/min</b>  |
|                       | <b>2. 900/min</b>  |
|                       | <b>3. 1250/min</b> |
|                       | <b>4. 1750/min</b> |
|                       | <b>5. 2600/min</b> |
| <b>Chuck size:</b>    | <b>13mm</b>        |



## Drill Press

### WARNING

Read this manual carefully before using the machine, for your own safety.

### SAFETY INSTRUCTIONS

When using the machine, always observe the enclosed safety instructions as well as the additional safety instructions.

The following symbols are used throughout this manual:



Denotes risk of personal injury or damage to the tool.

### ADDITIONAL SAFETY INSTRUCTIONS FOR DRILL PRESSES

- Only connect the machine to an earthed mains supply.
- Only use tree-core extension cords.
- Always wear safety goggles, and a hairnet for long hair.
- Do not wear gloves, ties or loose clothing.
- While drilling, never hold the workpiece by hand, but firmly tighten it to the drilling table using a vice e.g. Never keep your fingers on a place where they could touch the drill in case the workpiece should move unexpectedly.
- Do not use the machine until it has been mounted and installed completely according to the instructions.
- Do not switch on the machine while moving the head relative to the table or vice versa. Do not switch on the machine until having checked that head and table have been tightened firmly to the pillar.
- Do not use the machine if a part is damaged or badly functioning.
- Adjust the table or depth stop to prevent the drill from entering the table. Do not perform any design, assembly or construction activities on the table while the machine is switched on.
- Make sure that the chuck key (if applicable) has been removed before switching on the machine.
- Before switching on the machine, make sure the chuck has been mounted correctly, the drill has been mounted into the chuck firmly and the safety guard has been shut.
- In operation, use the recommended speed for the drilling accessories and the material.
- Switch off the power, remove the drill and clean the table before leaving the machine.
- Lock the on/off switch when leaving the machine.

### ELECTRICAL SAFETY



Always check that the power supply corresponds to the voltage on the rating plate.

### DESCRIPTION (Fig. A)

Your drill press has been designed for drilling holes in wood, metal and plastics.

- 1 On/off switch
- 2 Pulley system cover
- 3 Screw
- 4 Slide rod screw
- 5 Slide rod
- 6 Pillar locking handle
- 7 Table locking nut
- 8 Chuck
- 9 Collar
- 10 Safety guard
- 11 Lift handle
- 12 Drill lift
- 13 Depth stop

### Assembling the machine (Fig. B)

Install the machine on a level and solid surface.

- Mount the pillar (19) to the foot (20) using the bolts (21).
- Slide the table (18) over the pillar.
- Place the head (14) on top of the pillar. Firmly tighten the Allen screws (15) to keep the head in place.
- Slide the chuck key (8) onto the drill shaft.
- Insert the safety guard (10) as far into the bracket (16) as possible and turn the screws (17) into the holes.

Tighten the screws.

- Screw the lift handles (11) into the body of the drill lift (12).
- Remove the anti-corrosive oil on the uncovered metal parts using a cloth and a little paraffin oil. Proceed with greasing the parts with machine lubricating oil.



If parts are missing, do not assemble the machine, do not plug in and do not switch on the machine until the missing parts have been mounted according to the instructions.



Check before operation:

- that the table can be moved smoothly;
- that the drill lift can be moved up and down smoothly;
- that the machine does not shake when it is switched on.

### Inserting and removing a drill (Fig. A)

- Open the safety guard (10).
- Open the chuck (8).
- Insert the drill into the chuck.
- Fasten the chuck by hand.
- Fasten the chuck firmly by inserting the chuck key in one of the holes in the side of the chuck and turning it clockwise.
- Shut the safety guard.
- In order to remove a drill, proceed in reverse order.



Before inserting or removing a drill, always pull the plug from the wall socket.

### Adjusting the drilling depth (Fig. A)

- Make sure the lock nuts on the thread of the depth stop (13) have been fully turned up.

Use the lift handles (11) to move the chuck (8) to the required drilling depth. To determine the required drilling depth, refer to the arrow on the depth stop and the corresponding value on the scale. First turn the lower lock nut downward until it has reached the stop on the machine, then turn the upper lock nut downward to secure the lower lock nut.

### Adjusting the table (Fig. C)

The table can be height-adjusted, turned and toppled.

Height adjustment:

- Slacken the pillar locking handle (6)
- Adjust the table (18) to the required height.
- Tighten the pillar locking handle.

Turning:

- Slacken the pillar locking handle (6).
- Turn the table (18) to the required position.
- Tighten the pillar locking handle.

Toppling:

- Slacken the table locking nut (7).
- Topple the table (18) to the required position.
- Tighten the table locking nut (7).

### Adjusting the speed (fig. A & D)

Remove the screw (3) and open the cover (2).

Slacken the slide rod screw (4) and push the motor housing (25) to the front to release the tension on the V-belt (22). Clamp the slide rod (5) by tightening the slide rod screw.

Put the V-belt in line on the drill shaft pulley (23) and on the motor pulley (24) in one of the combinations specified on the inside of the cover.

Slacken the slide rod screw and push the motor housing to the rear to tension the V-belt. Clamp the slide rod by tightening the slide rod screw.

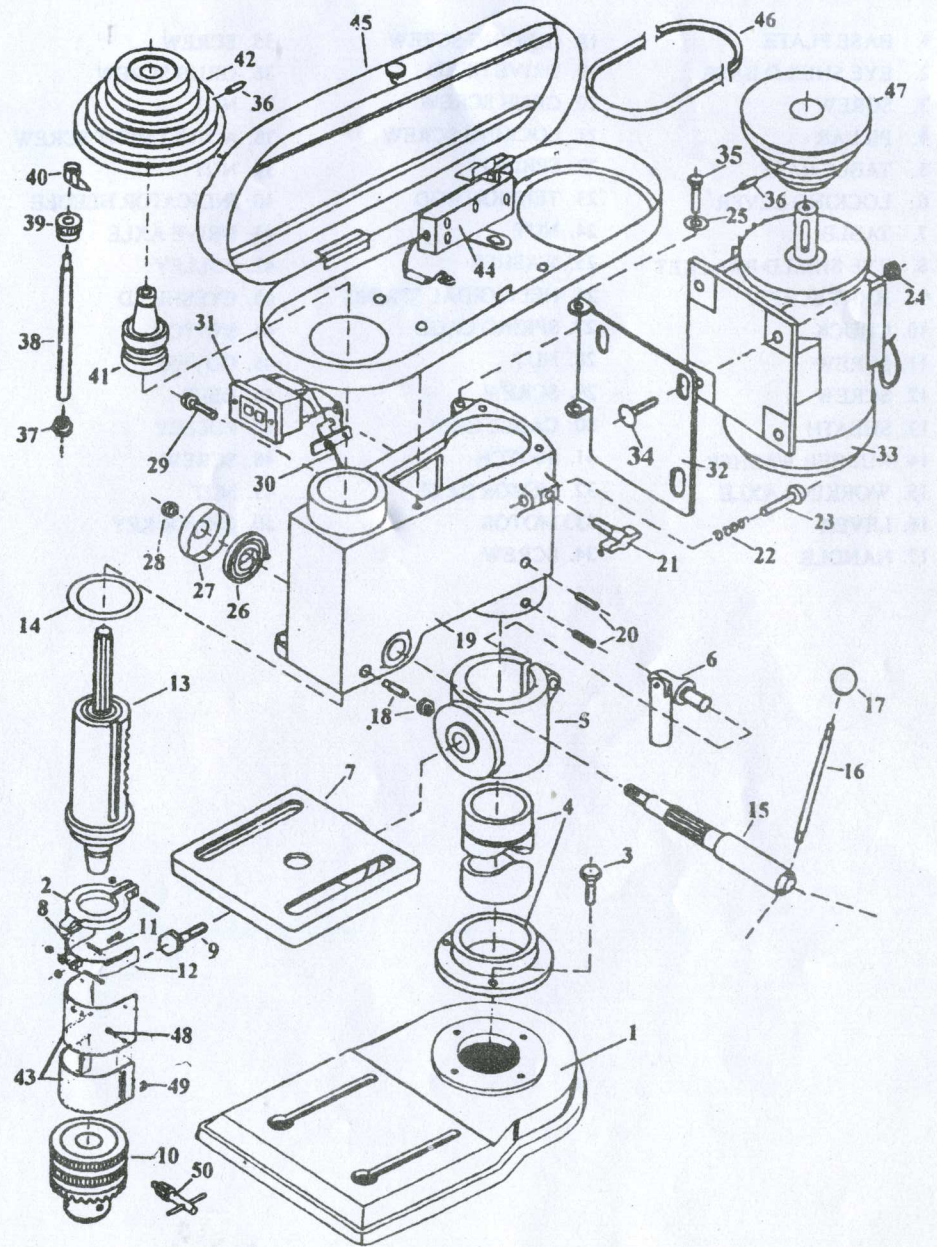
Close the cover and tighten the screw.

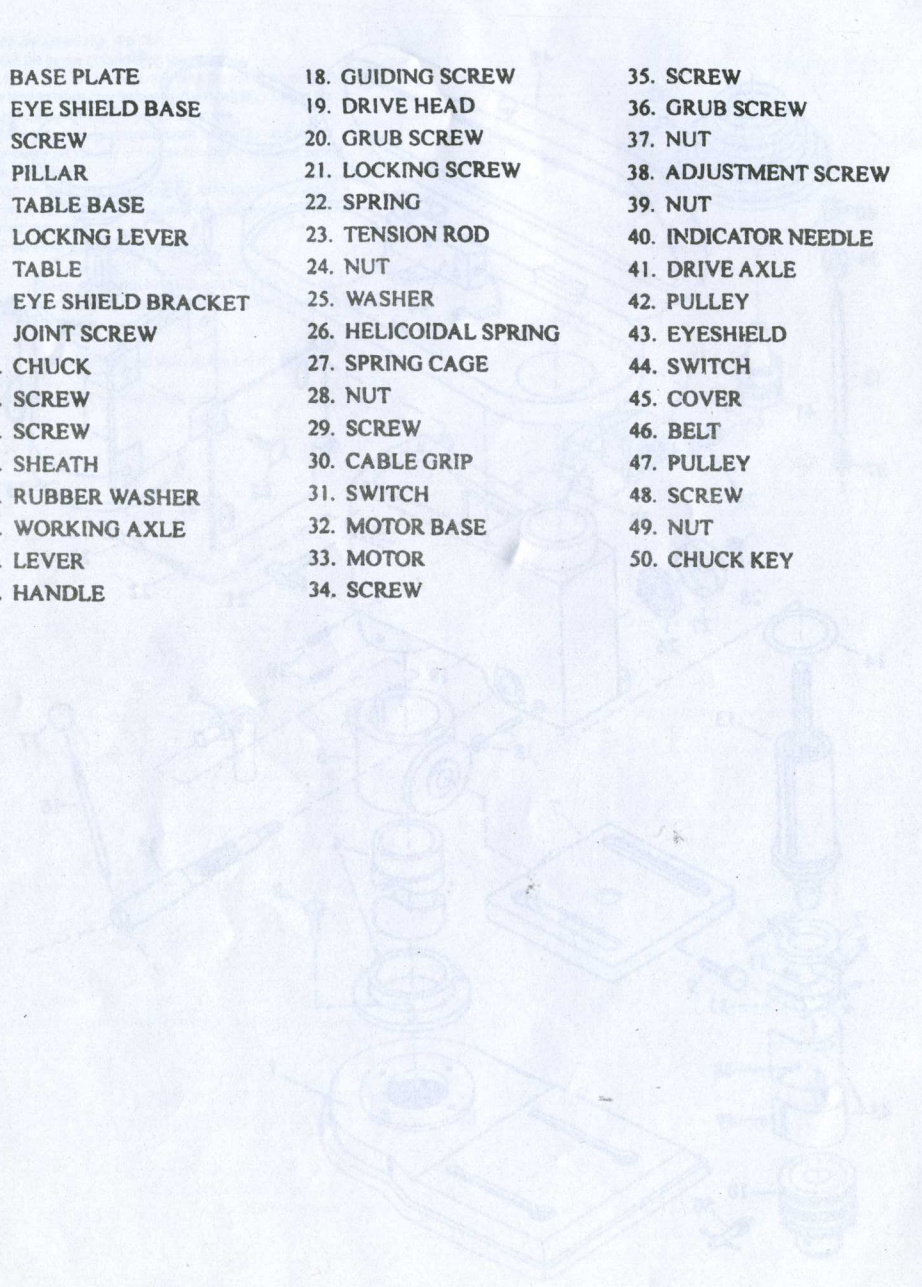


Switch off the machine and wait until the machine has come to a complete standstill before changing the speed.

Adjust the speed to the material to be drilled and the drilling diameter.

• For drilling in wood, choose a high speed.



- 
1. BASE PLATE  
2. EYE SHIELD BASE  
3. SCREW  
4. PILLAR  
5. TABLE BASE  
6. LOCKING LEVER  
7. TABLE  
8. EYE SHIELD BRACKET  
9. JOINT SCREW  
10. CHUCK  
11. SCREW  
12. SCREW  
13. SHEATH  
14. RUBBER WASHER  
15. WORKING AXLE  
16. LEVER  
17. HANDLE  
18. GUIDING SCREW  
19. DRIVE HEAD  
20. GRUB SCREW  
21. LOCKING SCREW  
22. SPRING  
23. TENSION ROD  
24. NUT  
25. WASHER  
26. HELICOIDAL SPRING  
27. SPRING CAGE  
28. NUT  
29. SCREW  
30. CABLE GRIP  
31. SWITCH  
32. MOTOR BASE  
33. MOTOR  
34. SCREW  
35. SCREW  
36. GRUB SCREW  
37. NUT  
38. ADJUSTMENT SCREW  
39. NUT  
40. INDICATOR NEEDLE  
41. DRIVE AXLE  
42. PULLEY  
43. EYESHIELD  
44. SWITCH  
45. COVER  
46. BELT  
47. PULLEY  
48. SCREW  
49. NUT  
50. CHUCK KEY